



**HEAVYWEIGHT**  
**SEDIMENT CONTROL SOLUTIONS**  
Effective • Durable • Reusable

# DURAWATTLE™

**INFORMATION  
GUIDE**



A durable, reusable  
flexible sediment barrier  
that's...

**MADE TO  
BE DRIVEN  
OVER**

again and again in  
high traffic.

# DuraWattle™ VS Straw Wattle

✓ **96.6% sediment retention**

See ASTM D7351 test results

✓ **Drive over it!**

At high traffic entrances.  
For full site access.

✓ **Lightweight, easy to install**

6 lbs per 12 foot section  
(.5 lbs per foot)  
Workers' Comp friendly.

✓ **Reusable**

From phase to phase.  
50-95% to use on next job.  
Significant cost savings.

✓ **Installs effectively on soil,  
sidewalk, and hard surfaces**

✓ **Ships compressed up to  
1800 ft per pallet**

✓ **Low profile keeps site  
looking clean**

✗ **55% average sediment  
retention**

✗ **Noncompliant and  
damaged if driven over**

✗ **Heavy, a pain to install**  
50 lbs per 25 foot section  
(2 lbs per foot)  
Leads to possible claims.

✗ **Not reusable**  
Falls apart quickly.  
Needs frequent and  
costly replacement.

✗ **Not effective on hard  
surfaces**

✗ **Ships at 300 ft per pallet**

✗ **Makes a mess on sites**

## Versatile Applications



Sidewalk



Hard Surface



Soil

## Long Lasting

New home moratorium site - Sacramento, CA



2006



2014

8 YR  
OLD  
WATTLE

## Ships Compressed



1800 ft Compressed DuraWattle™

VS

1800 ft Straw Wattle



## Cost Savings Example: Colorado Home Building Construction

Average cost breakdown for complete job using 1200 ft of wattle:

	Straw Wattle	DuraWattle™
Install Cost <i>(materials + labor)</i>	\$2,400 <i>(\$2 per ft)</i>	\$5,100 <i>(\$4.25 per ft)</i>
Removal Cost <i>(labor)</i>	\$540 <i>(\$.45 per ft)</i>	\$540 <i>(\$.45 per ft)</i>
Times Reinstalled	7	0
Total Reinstall Cost <i>(materials + labor)</i>	\$20,580	0
<b>Total Project Cost</b>	<b>\$23,520</b>	<b>\$5,640</b>
% Ready To Use On Next Site	0% Building basements led to lower than average reuse.	50%

In this instance, using the  
Heavyweight DuraWattle™  
saved \$17,880!

That's a  
**76%**  
savings!

## Cost Savings Example: California Home Building Construction

Average cost breakdown for complete job using 1200 ft of wattle:

	Straw Wattle	DuraWattle™
Install Cost (materials + labor)	\$2,220 (\$1.85 per ft)	\$5,220 (\$4.35 per ft)
Removal Cost (labor)	\$540 (\$.45 per ft)	\$540 (\$.45 per ft)
Times Reinstalled	4	0
Total Reinstall Cost (materials + labor)	\$11,040	0
<b>Total Project Cost</b>	<b>\$13,800</b>	<b>\$5,760</b>
% Ready To Use On Next Site	0%	90% & lasting 3-4 yrs! DuraWattle™ install cost at next site is only \$1.50/ft!

That's a  
**58%**  
savings!

In this instance, using the  
Heavyweight DuraWattle™  
saved \$8,040!

## DuraWattle™ Installation

### Soil/Sidewalk:

1. Inflate the wattle
2. Dig a trench
3. Connect the interlocking wattle pieces
4. Secure the wattle's tail in the trench with included pins
5. Fill in dirt over the wattle's tail



### Hard Surfaces:

1. Inflate the wattle
2. Connect the interlocking wattle pieces
3. Fold the wattle's tail in half
4. Use 8 ft long 1"x4" wood planks on the tail, secured with concrete anchors



Easy, quick, and workers' comp friendly!

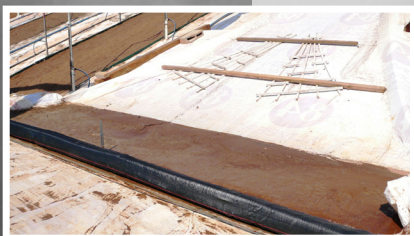
**MADE TO  
BE DRIVEN  
OVER**

Our customers love the **cost benefit** of the DuraWattle™!

*"The Heavyweight DuraWattle has been driven/stepped on and various materials have been stacked on it. We will typically replace straw wattle several times during the phase of production home construction. Therefore, we have received a cost benefit, and can even reuse the majority of your product at other locations."*

- Rudy Estrada, Morrison Homes

## Specifications



### Size:

5.5" tall x 12' long.

Equipped with interlocking ends for a continuous barrier.

Tail section eliminates undermining.

### Materials:

Inner Core - flexible

Polyurethane covered in a Polyethylene film

Outer Cover - 6.2oz, high tensile strength, UV-stabilized, 100% polypropylene monofilament filter fabric

### Filtration Testing Results:

Filters 96.6% sediment and reduces turbidity by 58%.

(ASTM D7351, Tri Environmental, Oct 2007)

**Manufactured 100% in the USA.**

Drawings and other resources available at [DuraWattle.com/Resources](http://DuraWattle.com/Resources)

**Our customers love to reuse the DuraWattle™!**

*"After we've built out homes in our production area, 90 to 95% of the wattle is picked up and is being reinstalled in other areas. In the past, we had to call in crews to repair and replace wattle before every storm event."*

- Joe Chretien, K Hovnanian Homes



**Contact us to  
request a  
FREE  
SAMPLE  
and see for  
yourself!**

Additional resources  
available online:

- > installation video
- > customer reviews
- > CAD drawings
- > SWPPP binder inserts



**HEAVYWEIGHT**  
SEDIMENT CONTROL SOLUTIONS  
Effective • Durable • Reusable

**(916) 922-9222**

**DuraWattle.com/Resources**

**info@wtbinc.net**

**Manufactured  
100% in the USA  
by WTB, Inc.**

